

HOUSE FABRIC

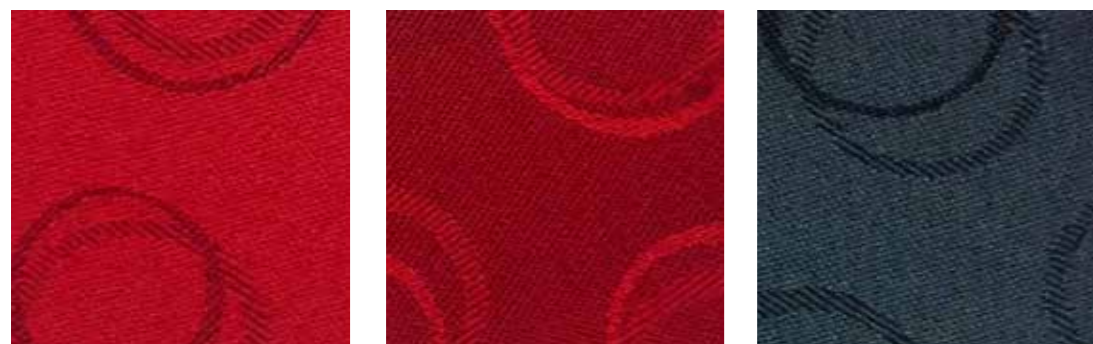
LOOP



AQUA

SEA

BLACK



HOT

RED

MIST



LIME

TREE

DUST

HOUSE FABRIC

METRO



BLACK

INK

HOUSE FABRIC

JAZZ



INDIGO

TURQUOISE

NAVY



MIDNIGHT

CHARCOAL

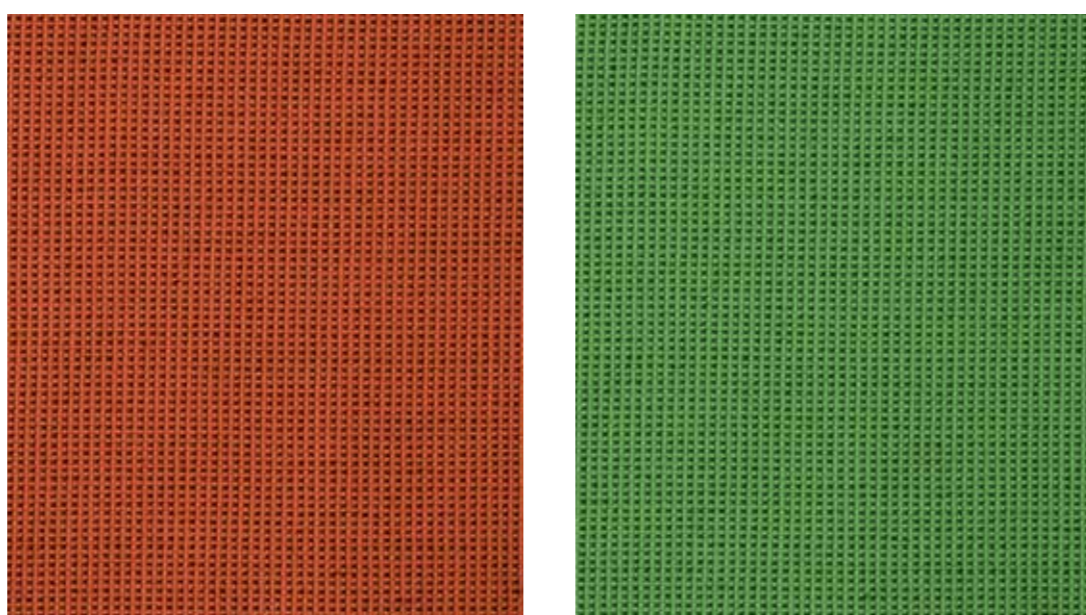
CRIMSON



BLACK

GOLD

SILVER



ORANGE

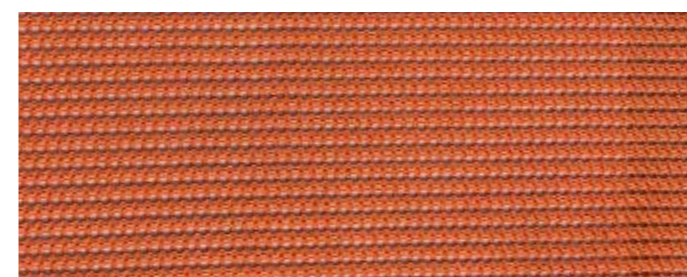
APPLE

HOUSE FABRIC

JAZZ MESH



MINT



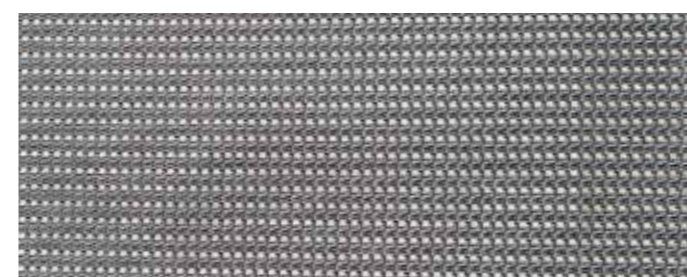
CITRUS



OCEAN



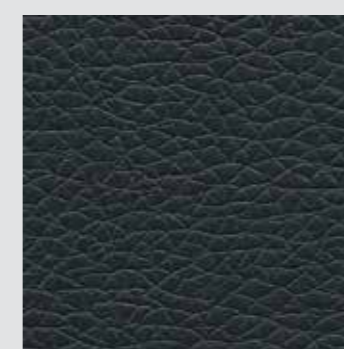
HOT



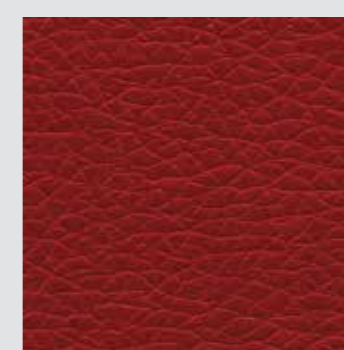
SLATE

CATEGORY 1

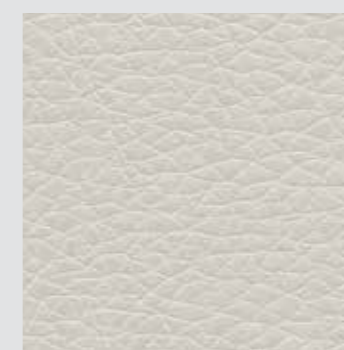
SPADE VINYL



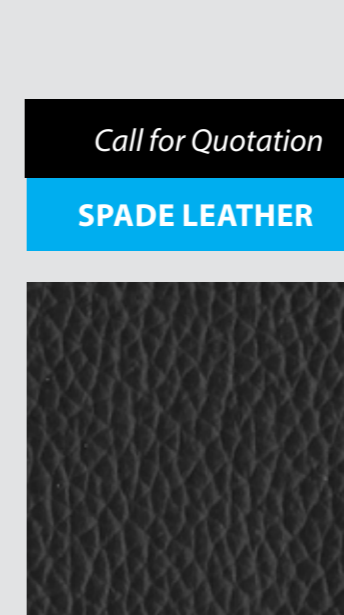
BLACK



RED



WHITE



BLACK

Call for Quotation

SPADE LEATHER

CATEGORY 3

LANA WOOL



STEEL

GREY

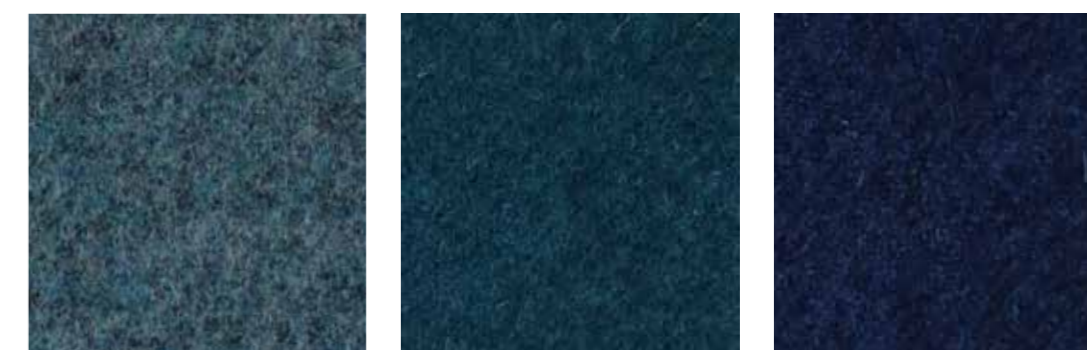
CARBON



SAND

WINE

FIRE



SKY

WAVE

SAPPHIRE



TEAL

FOREST





**STYLE ERGONOMICS AUSTRALIA PTY LTD**  
NSW | VIC | QLD | HONG KONG | CHINA

**NSW BRANCH**  
A: 83-85 Percival Road,  
Smithfield  
NSW 2164

**T:** 1300 735 574

**F:** + 612 9757 1848

**MEL BRANCH**  
A: 21-23 Edison Road,  
Dandenong South  
VIC 3175

**E:** sales@styleergonomics.com.au

**W:** www.styleergonomics.com.au

**QLD BRANCH**  
A: 3 Aliciajay Circuit,  
Luscombe  
QLD 4207



# FABRIC RANGE

## SPECIFICATION:

**FABRIC/VINYL WIDTH**  
• 1.51m

### COMPOSITION

**JAZZ**

• 100% Polypropylene fiber

**LOOP**

• 100 % Terylene

**METRO**

• 100% Polyester fibre

**JAZZ MESH**

• 100% Polyester

**SPADE VINYL**

- 5% Dyestuff
- 3-5% DOP
- 20-25% PVC powder
- 23-25% Plasticizer
- 20-25% Polyvinyl chloride
- 10-15% Calcium carbonate
- 10-15% Fabric

**Martindale rups**

• After dry / 200000 Martindale Cycles

**MERINO**

• **ABRASION RESISTANCE**  
5 Year warranty/ 50000  
Martindale Cycles

• **Composition**

100% Australian wool

• **Environmental**

Rapidly renewable and  
compostable

• **Width**

142cm

• **Weight**

600-620g/m

## INSTRUCTION OF CARE:

- Clean with wet cloth only
- Keep out of direct sunlight
- Do not use any detergents to clean fabrics
- Do not use chemicals to clean fabrics
- Keep fabrics dry at all times
- Fabrics are not suitable for outside use